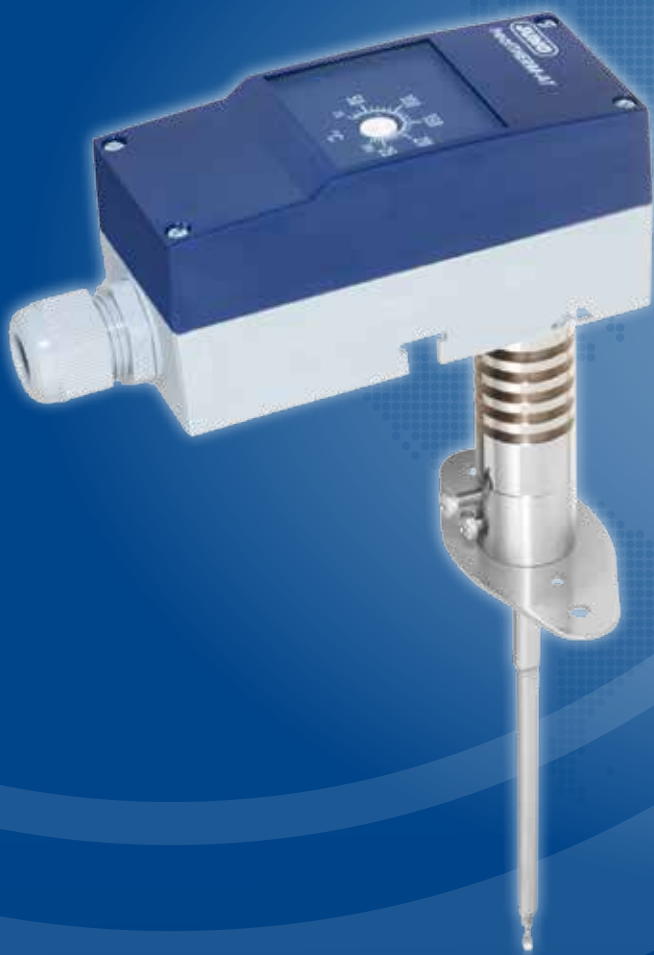




More than **sensors + automation**

JUMO heatTHERM-AT

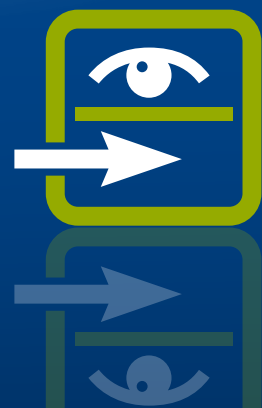
Flue gas temperature monitor/limiter, type 603070



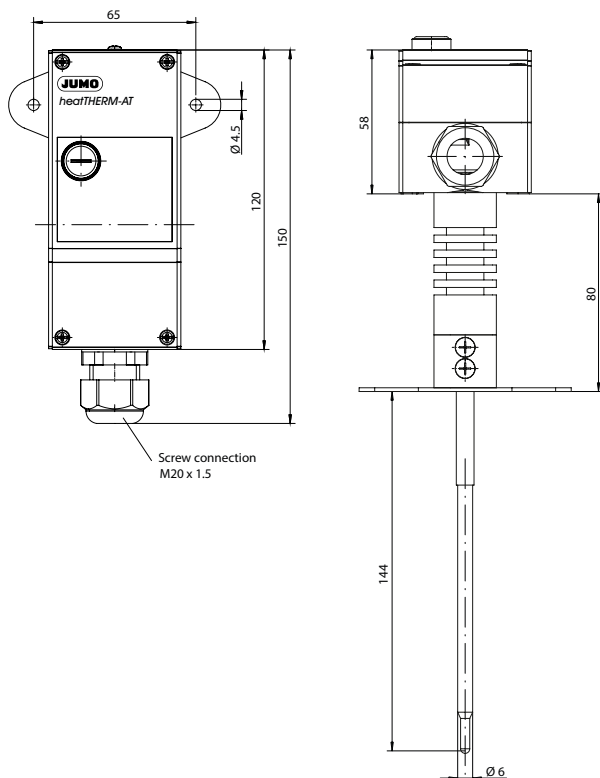
Thoroughly accurate

- 600 °C over-temperature security at the probe
- Reduced installation time thanks to Push-In® terminal technology and delivery of a fully mounted device
- Self-monitoring thanks to capillary break protection
- Tested and approved as a flue gas temperature monitor/limiter according to DIN EN 14597

Type 603070



Flue gas temperature monitor (ATW)



Brief overview

The flue gas temperature monitor (ATW) from the JUMO heatTHERM-AT range is perfectly equipped to meet the requirements of the heating industry and the related sectors. The external diameter of the probe element measures 6 mm. This makes the thermostat considerably more robust and suitable for heating more than living spaces. Yet it meets the requirements of DIN EN 14597 with regard to the response time of < 45 s in air, meaning that the device is also approved according to this standard. The thermostat is also available in a version as a flue gas safety temperature limiter (ASTB).

General data

JUMO heatTHERM-AT – type 603070

Versions	ATW and ASTB
Measuring range	20 to 280 °C
Probe diameter	6 mm (stainless steel)
Terminal diameter	9 mm
Fitting length	150 mm
Switching capacity at the normally closed contact	AC 230V, 16 A
Maximum permissible probe temperature	600 °C

Approvals



Application areas

Monitoring the flue gas temperature in plastic flue gas lines to avoid thermal destruction. Inhibiting a heating installation when operating two heating systems on one chimney (bivalent operation).